

# Safe Routes to School

Executive Summary



## The Vision

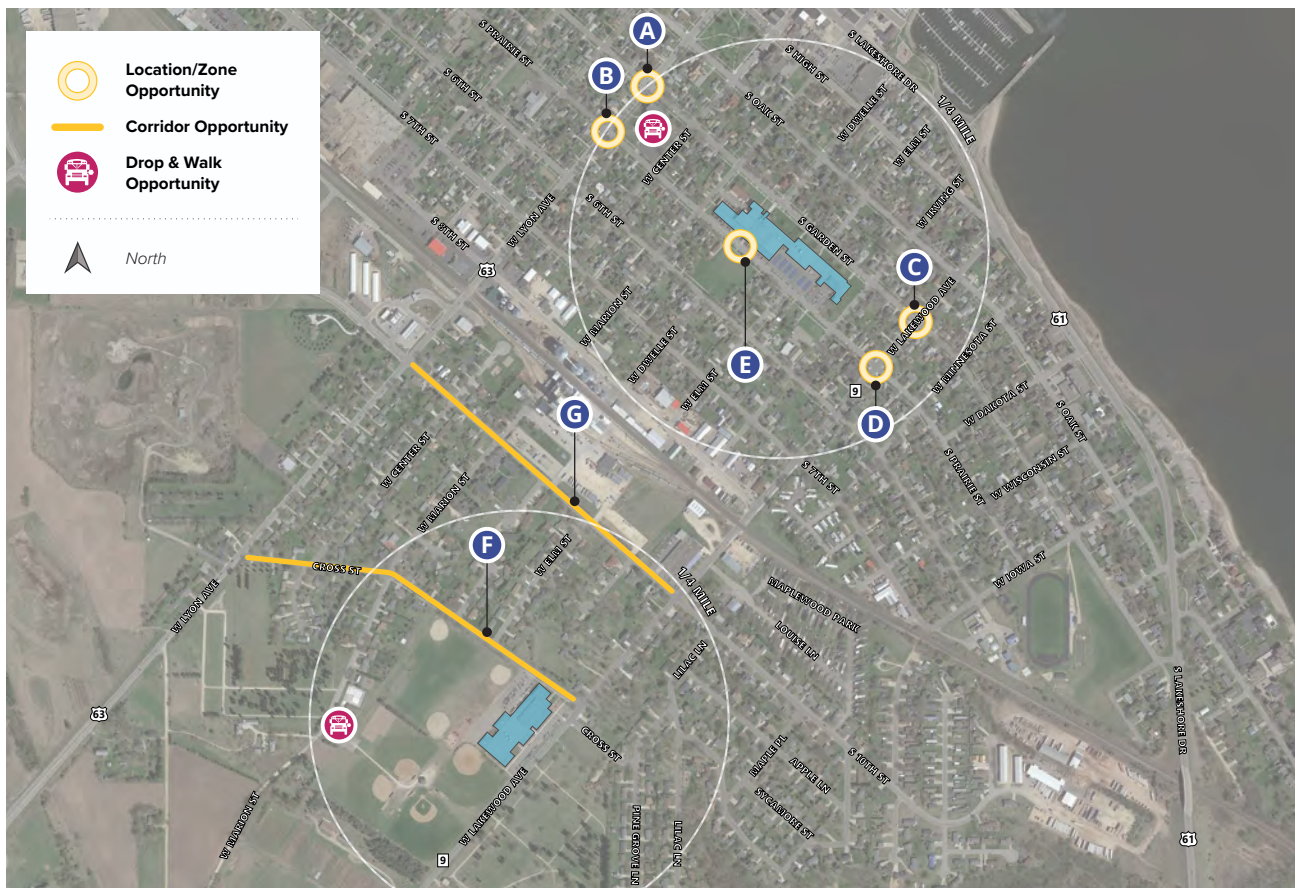
Walking and biking to school is safe, comfortable, and fun for all students at Bluff View Elementary and Lincoln High.

In June 2020, Lake City Public Schools completed a year-long planning process that culminated in a Safe Routes to School (SRTS) Plan. The SRTS Plan identifies program strategies to create a culture of walking and biking as well as infrastructure recommendations to support a safe and comfortable environment for active transportation near school. It was made possible with funding from the Minnesota Department of Transportation (MnDOT) and was developed in collaboration with the Lake City Public Schools community. The Plan includes a variety of strategies that are often called the “Six Es” of SRTS: equity, engineering, education, encouragement, enforcement, and evaluation.

This executive summary highlights near-term, high-priority recommendations from the SRTS Plan.

## Infrastructure

Engineering projects that improve streets and routes



Map above shows high priority infrastructure recommendations only.

- A-D** **Lyon Ave and Lakewood Ave at Garden St and Prairie St:** Install high visibility crosswalk markings and curb extensions or a median refuge, and upgrade pedestrian ramps. Consider installing a Rapid Rectangular Flashing Beacon if additional enhancements are needed.
- E** **Prairie St mid-block crossing to Lincoln High:** Install high visibility crosswalk markings and restrict parking near the crossing. Consider curb extensions and a raised crosswalk. Install pedestrian ramps/tactile warning strips as appropriate in coordination with a raised crossing.
- F** **Cross St between Lyon Ave and Lakewood Ave:** Install sidewalk where missing. Implement an enhanced school speed zone. Consider corridor-wide traffic calming measures such as roadway narrowing, speed bumps, mini traffic circles, curb extensions, and treatments.
- G** **10th St between Lyon Ave and Lakewood Ave:** Consider corridor-wide multimodal and traffic calming treatments including installing sidewalk and/or trail, pedestrian lighting, pedestrian ramps, and crossing enhancements.



### GET INVOLVED

Plan a walking or biking route with your child, practice safe driving, and show your support by volunteering! Contact your school principal or local SRTS team lead (below) to learn how you can get involved.

Erick Enger, Superintendent of Lake City Public Schools | [eenger@lake-city.k12.mn.us](mailto:eenger@lake-city.k12.mn.us)

Learn more about SRTS in Minnesota at [www.dot.state.mn.us/saferoutes/](http://www.dot.state.mn.us/saferoutes/)

## Programs

Education, encouragement, evaluation, and enforcement



### WALK & BIKE TO SCHOOL DAYS

Walk/Bike to School Days build awareness and excitement for walking and biking to school, and encourage students and families to try something new.

**Who:** School administrators and staff, parent volunteers, student leaders and athletes



### DROP & WALK

Many Lake City students live too far from school to walk or bike from home. Remote drop events give students an opportunity to walk part of the way.

**Who:** Bluff County Transportation, school staff, parent volunteers, Kwik Trip for donations



### SRTS COMMUNICATION

Communication may include website updates, social media, newsletters, workshops, and other strategies to educate families about school transportation practices and promote walking and biking as an option.

**Who:** Lake City Public Schools communication, Bluff View and Lincoln High administration